

Gifu Pref. Kiso River System
Tokuyama Dam & Yokoyama Dam



Starry Place Fujihashi (featuring thick shiitake mushrooms, etc.)

Sakauchi, close to Yashagaik Pond (featuring ostrich croquettes, etc.)

Yoko-Toku Curry & Rice

¥1,000

¥800

Starry Place Fujihashi

Sakauchi, close to Yashagaik Pond

Road Station Starry Place Fujihashi (Restaurant)
Address: Higashi Yokoyama, Ibi-kawa Town, Ibi-Gun, Gifu Pref.
Phone: 0585-52-2021
Opening hour: 8:00-16:30 (closed on Tue.)
Yokoyama, Ibi-kawa Town, Ibi-Gun, Gifu Pref.

Road Station Sakauchi, base for Yashagaik Pond (Restaurant)
Address: Sakaguchi Hirose, Ibi-kawa Town, Ibi-Gun, Gifu Pref.
Phone: 0585-53-2262
Opening hour: 11:00-14:00 (till 15:00 on weekends & holidays)



Celebrating 50th anniversary of Yokoyama Dam operation, these dishes are available for a limited period. In its long history, Ibi River has been giving a lot of benefits to its river basin, but it has also been causing water disasters often due to the climate and geographic conditions, thus causing threat to the lives of its basin. To protect them, two dams were constructed, i.e. Yokoyama Dam in 1964 and Tokuyama Dam in 2008. The coordinated operation of those two dams now enables the protection of their lives from possible disasters.

"Yoko-Toku Dam Curry & Rice" is the name of combo of the dam curry & rice, giving us the synergy of coordination of two dams in addition to the rich flavor generated by the local produce of Ibi River basin. It is now being served at two road stations near the dams. Among "dam curry & rice" served near the dam sites across the country, combination of two types of curry & rice dishes are available only here.

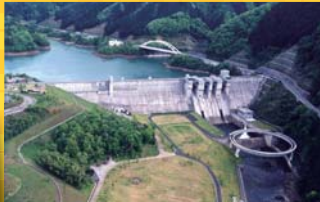
Kyoto Pref. Yodo River System
Hiyoshi Dam



Hiyoshi Dam Curry & Rice

¥900

Road Station Springs Hiyoshi (Restaurant Katsuragawa)
Address: Miyanomukai, Naka, Hiyoshi-machi, Nantan City, Kyoto Pref.
Phone: 0771-72-1526
Opening hour: 11:00-21:00 (Closed on Wed.)



In September of 2010, "Hiyoshi Dam Curry Rice" started being served at the restaurant in the Road Station Springs Hiyoshi, located in the downstream area of Hiyoshi Dam. Each ingredient of the curry & rice dish symbolizes the different part of the dam site, as follows: rice is the dam body; curry sauce - the reservoir surface, boiled egg - the loop bridge; ancient rice - lawn area, and pickles-fallwater. The ingredients consist of venison, locally grown rice, ancient rice, and local eggs, etc. So this curry & rice is now well known as the genuine local dish. This dish is attractive too because of the original dam card of curry & rice given when ordered.

Kochi Pref. Yoshino River System
Sameura Dam



Sameura "Gibier" Curry & Rice

Sameura "8 Edible Leaves" Curry & Rice

Sameura Dam Curry & Rice

¥800-¥2,500

Yutorisuto Park Otoyo
Address: Nakamura Daio, Otoyo-cho, Nagaoka-Gun, Kochi Pref.
Phone: 0887-72-0700
Opening hour: 10:00-17:00 (closed on Tue.)



Sameura Dam Curry & Rice is served in two kinds. One is "Gibier" version for ¥2,000. This dish consists of fried and skewer venison and boar meats garnished with the salad, symbolizing the woods; the other is "Minokita 8 Edible Leaves" version for ¥1,400, for which lots of locally grown vegetables are served in addition to the curry sauce. Both dishes are served in large plates (42cm in diameter), which are usually used for famous Sawachi Cuisine, with huge volume of locally grown rice of Otoyo-cho. For those who can only eat just a small volume, mini-mini size dishes are available for ¥800-¥1,400. From autumn of last year, Sawachi size plate became available for ¥2,500, which is about 5 times as large as the regular size. The rule is that a single person needs to eat up. If succeeded, the certificate and a souvenir is given. Why don't you try once?

Topics

Japan Water Agency Facilities



DAM CURRY & RICE MAP

Varieties of "Dam Curry & Rice" representing respective dams are shown here. Why don't you try these special curry and rice dishes for lunch when you visit us for leisure?



*Opening hours and closing dates may change. Please check them prior to you visit

Gunma Pref. Tone River System
Yagisawa Dam/ Naramata Dam



Medium volume dish Gravity type (Fujiwara/Sudagai/Amata Dam)

Regular volume dish Arch type (Yagisawa Dam)

Large volume dish Rockfill type (Naramata Dam)

*These pictures are samples of serving

Minakami Dam Curry & Rice

¥770-¥1,050

These dishes are served at eight restaurants in Minakami Town. For details, please visit the following website of "Minakami Hot Spring Hotel Cooperative Association":
http://www.minakami-onsen.com/damcurry.htm
Phone: 0278-72-2611

Minakami Dam Curry & Rice

Search



Yagisawa Dam and Naramata Dam are located in Minakami Town, Gunma Prefecture, which is the town of the source of Tone River with rich water resources and nature. The town has 5 different types of dams, and is called the water jar of Kanjo Region.

"Minakami Dam Curry & Rice" is served with standardized rice "molds" representing dam types and unified type of "dish." Please enjoy the beautiful shape of the arch type dam curry & rice (symbolizing Yagisawa Dam). As the water quality and quantity of the reservoirs vary from season to season, the curry sauce and topping symbolizing dam reservoir differ from restaurant to restaurant. Why don't you enjoy different dishes of dam curry & rice along with dam tours?

Saitama Pref. Ara River System
Yagisawa / Urayama Dam



Urayama Dam Curry & Rice

¥750

Sakura Lake Restaurant (Inside Urayama Dam Disaster Management Center Urarapich)
Address: Arakawakuna, Chichibu City, Saitama Prefecture
Phone: 0494-54-1059 (Ara River Commerce and Industry Association)
Opening hour: 11:00-13:30 (14:00 on weekends and holidays)



This curry & rice dish was newly introduced in 2014. Rice mound in the middle of the dish symbolizes the dam body and well matches with crispy ham cutlet, which implies the old-Chichibu Bridge. Seisui Bypass and aerator, both of which are key features of Urayama Dam, are also represented by the egg and pickles, respectively. Why don't you try this curry & rice which represents the symbols of facilities on one plate, while overlooking the real site from the restaurant?

Gifu Pref. Kiso River System
Agigawa Dam



Agigawa Dam Reservoir Curry

¥800

Friendly Restaurant (run by a NPO) at the Disaster Management Resource Center at the dam entrance plaza
Address: Hananashiya, Ena City, Gifu Prefecture
Phone: 0573-25-1302
Opening hour: 10:00-16:00 (Closed on Thur.)



Agigawa Dam Reservoir Curry & Rice imitates the shape of Agigawa Dam (a rockfill dam) namely, the rice from Tono area of Ena City imitates the dam body, and in summer time, Kuushinsai, Chinese vegetable leaves grown by Agigawa Reservoir are garnished. The egg centered in the curry sauce symbolizes the aerator and the other garnished vegetables and sausages placed along the rice imply the beautiful surrounding landscape in season. Why don't you try this dam reservoir curry & rice with full of local produce for a lunch or a snack?