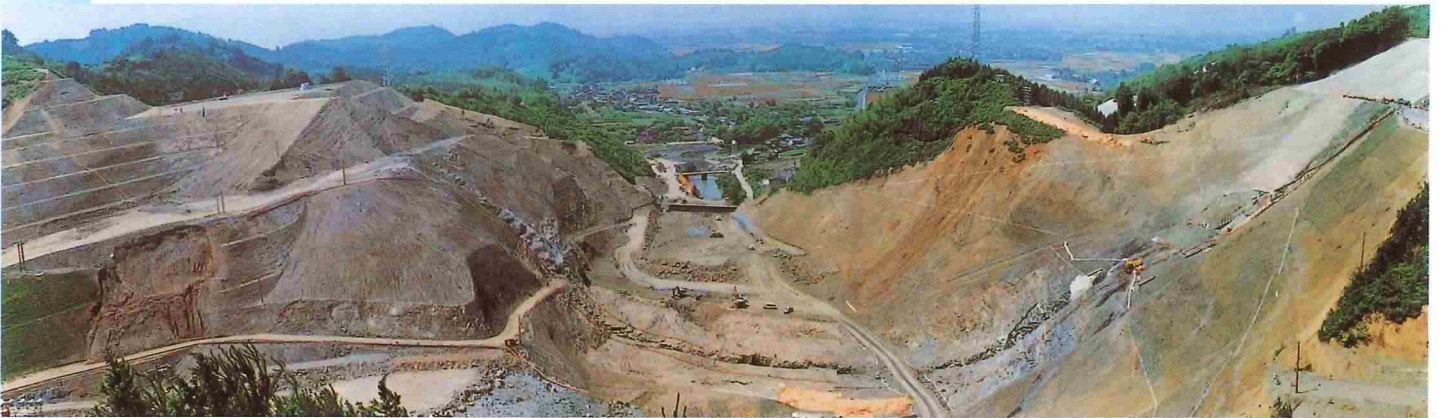
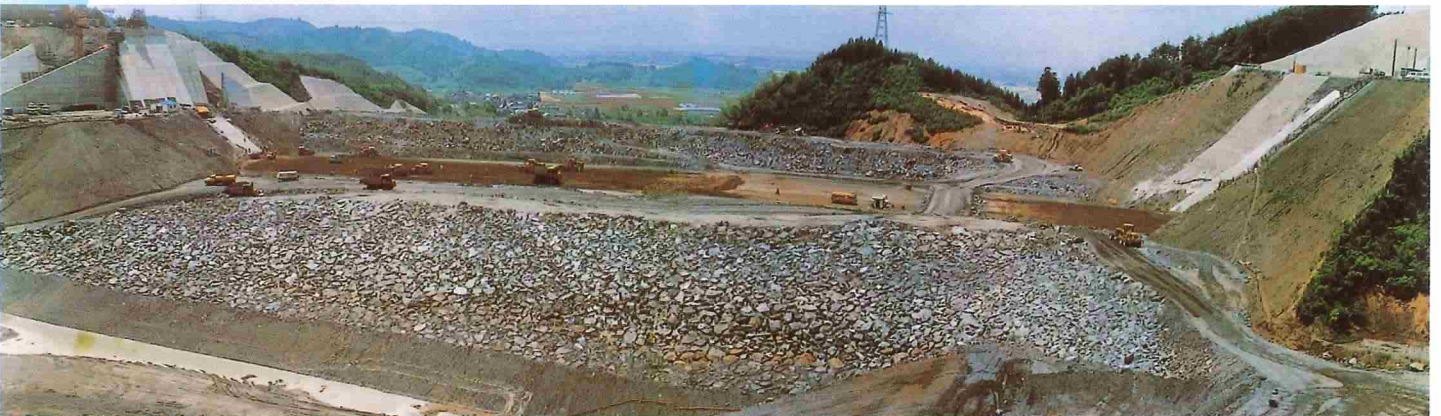


**Dam Site (Oct. 1974)**  
 (The municipal road on the upper right bank with the prefectural road just below)



**Dam Site (May 1975)**  
 (Excavation was almost completed, and rock filling began.)



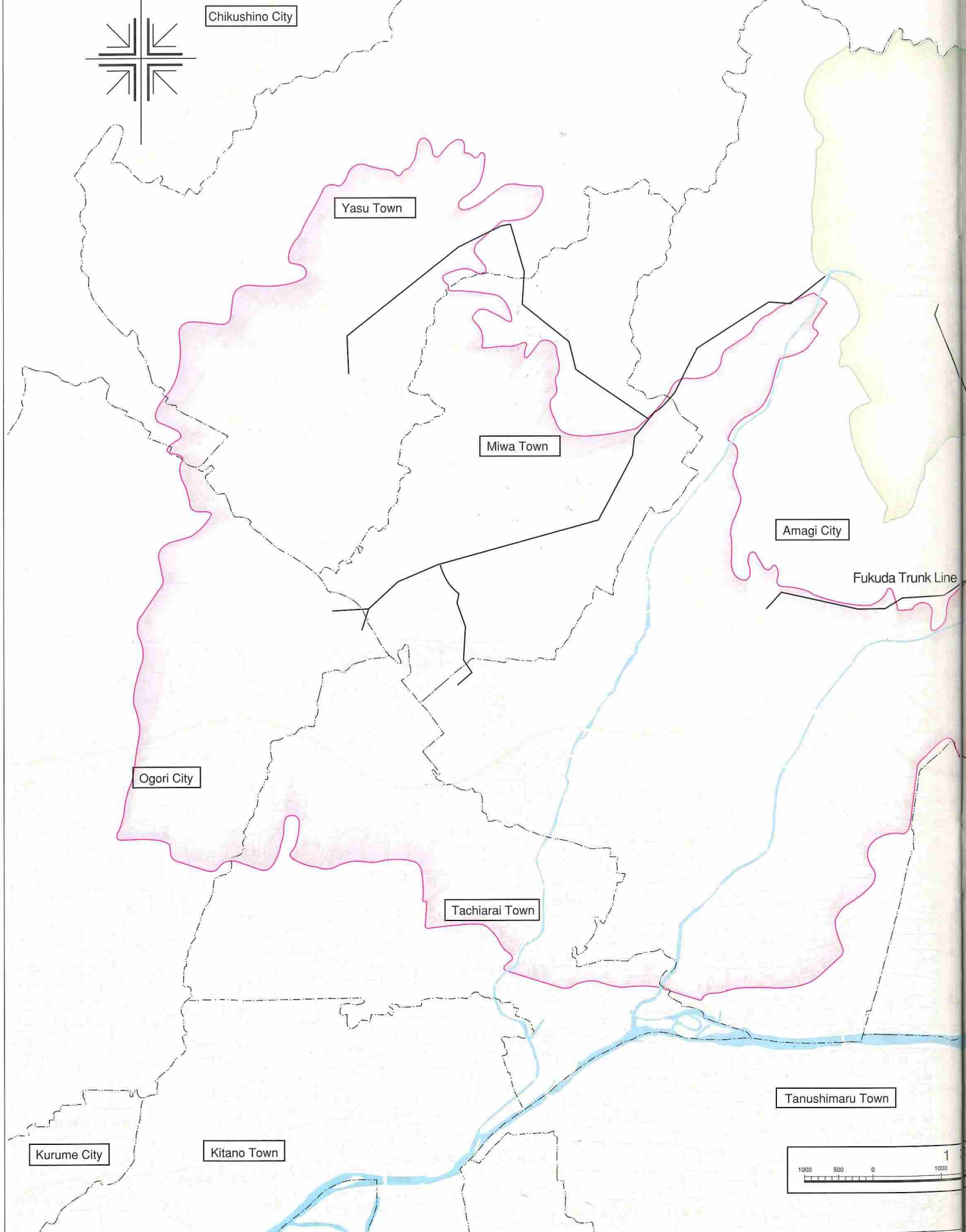
**Dam Site (May 1976)**  
 (Filling soil and rock amounted to roughly 1,900,000 m<sup>3</sup> in total.)



**Dam Site (Mar. 1977)**



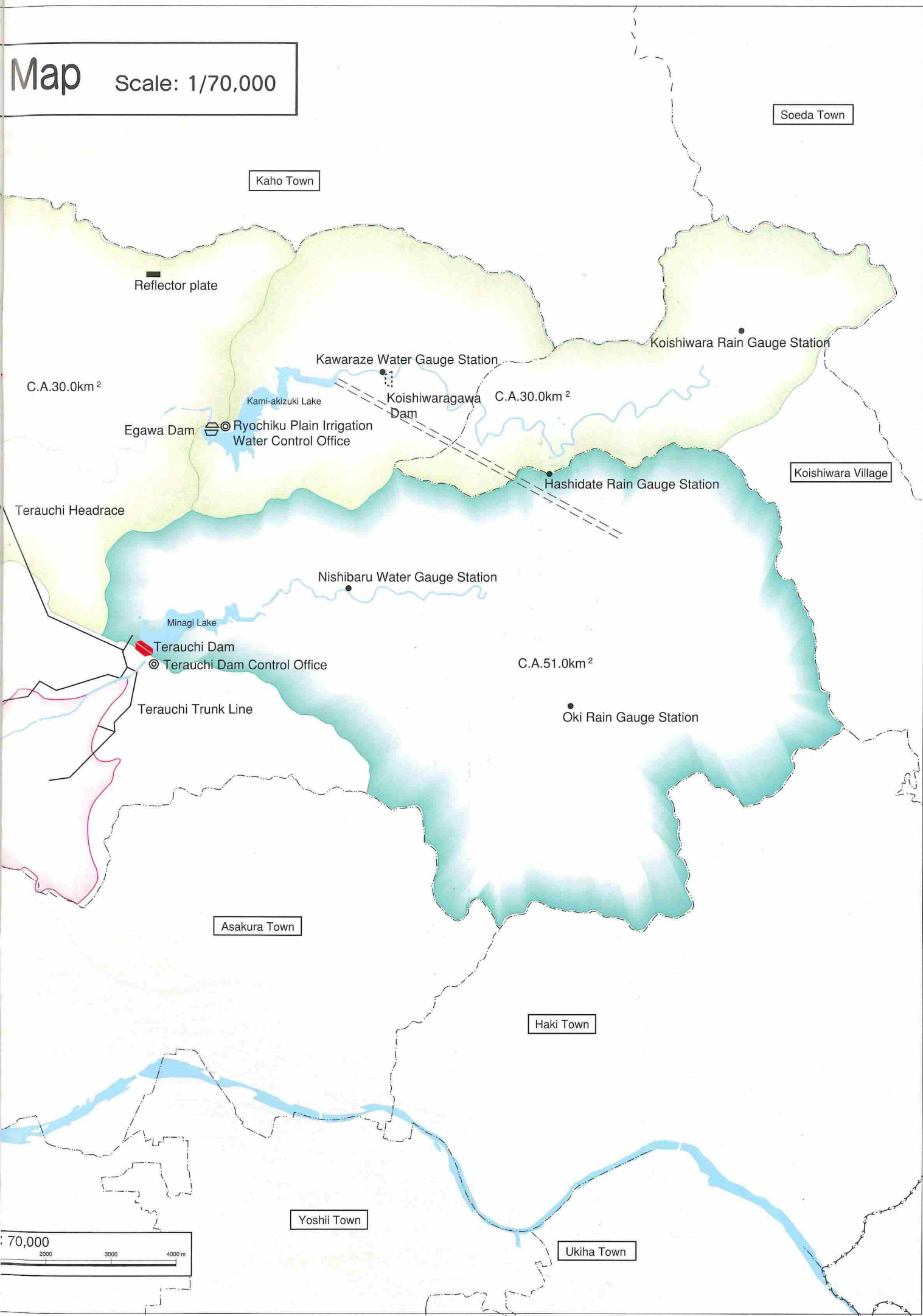
# Terauchi Dam Administrative



(The above is an officially approved reproduction of the 1/50,000-scale topographic map published by the Geographical Survey Institute, under the Ministry of Construction.

# Map

Scale: 1/70,000





# Welcome to the Town of Water and Greenery

The surrounding area of Terauchi Dam is a rich repository of nature. There are a lot of places to visit including a theme park where people can learn while enjoying themselves, treasured historic remains and places of interest, and industry rich in tradition. Pleasant experiences with the beautiful seasonal scenes, traditions and culture can be added to your album of memories.



■Okunchi Festival at the Minagi Shrine (Amagi City)

An autumn grand festival held on October 22 every year. With over 200 participants including those acting as shishi (lion) or oni (Japanese demon) or carrying a portable shrine, the Miyuki procession is designated as an intangible cultural asset by Amagi City and overwhelms the audience. (Roughly 2 minutes drive from Terauchi Dam)



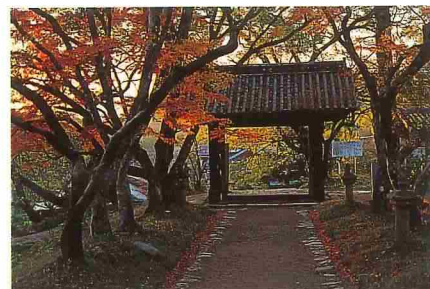
■Amagi Mizu-no-Bunka Mura (village of water culture) (Amagi City)

A theme park where you can learn about the importance of water while playing with water. The "Water Screen" is the first curtain in Japan that uses water. The image reflected on the screen is one spectacular scene to watch. Mizumaru, a village character, tells us about the birth of water and earth and the evolution of life. The plaza and the park, where seasonal flowers bloom, are also recommended sites to see. (Roughly 2 minutes drive from Terauchi Dam)



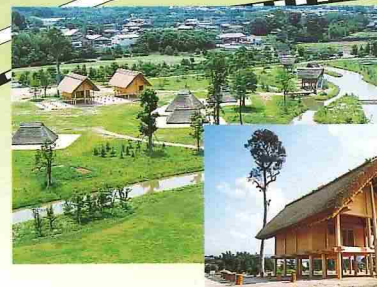
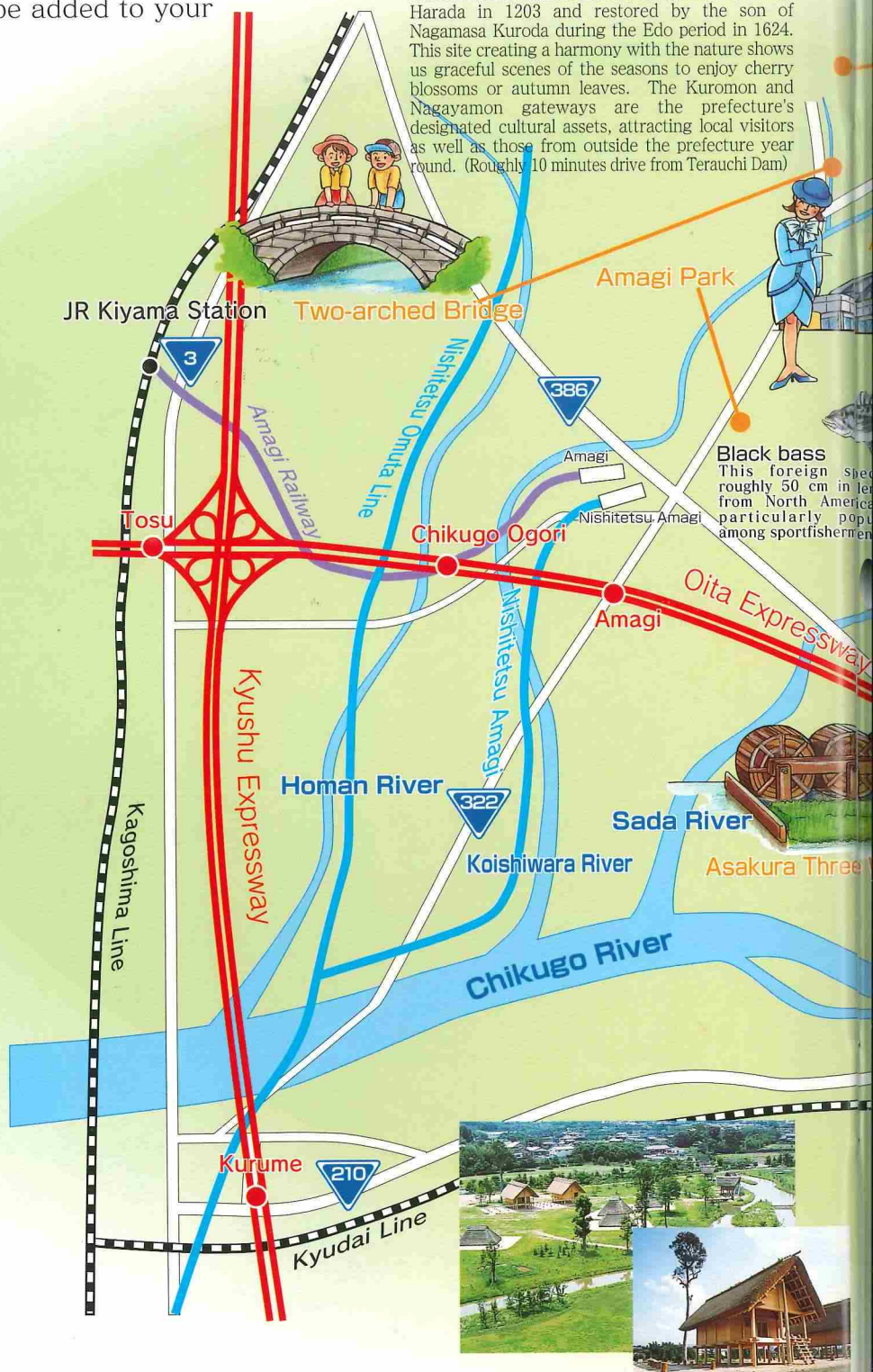
■Amagi Park (Amagi City)

A park blessed with nature in every season such as cherry blossoms, azaleas, irises and wisterias despite being in the center of the city near Amagi City Hall. (Roughly 10 minutes drive from Terauchi Dam)



■Ruins of Akizuki Castle (Amagi City)

Akizuki Castle was constructed originally by Taneo Harada in 1203 and restored by the son of Nagamasa Kuroda during the Edo period in 1624. This site creating a harmony with the nature shows us graceful scenes of the seasons to enjoy cherry blossoms or autumn leaves. The Kuromon and Nagayamon gateways are the prefecture's designated cultural assets, attracting local visitors as well as those from outside the prefecture year round. (Roughly 10 minutes drive from Terauchi Dam)



■Hiratsuka Kawazoe Ruins (Amagi City)

At this large-scale low land multiple-moated settlement, rows of fences or barriers and a watchtower that are believed to have served as defense facilities, a sanctuary, a residence of a headman and pit houses have been discovered and restored. Stands of Yayoi have also been recreated, showing the settlement of the Yamataikoku era. (Roughly 20 minutes drive from Terauchi Dam)

## Terauchi Dam Area Map of Natural Environment & Places of Interest





### Koishiware Ware (Koishiware Village)

Koishiware Ware is said to have a tradition of 400 or more years. During the Koishiware Village Folk Pottery Festival held twice yearly in May and October, numerous potteries attract tens of thousands of tourists. Koishiware Kogeikan, where the works of potters in Kyushu are displayed, offers a good opportunity for those who are not familiar with pottery. (Roughly 40 minutes drive from Terauchi Dam)

### Akizuki Ruins

#### Egawa Dam

### Amagi Mizu-no-Bunka Mura

**Quercus glauca**  
A 10 to 20-meter high tree that bears egg-shaped acorns in autumn.

#### Kingfisher

An orange and blue bird of roughly 17 cm in length that dives in the water to catch fish.

#### Terauchi Dam (Minagi Lake)

#### Lake smelt

These fish are roughly 15 cm in length and live in rivers or lakes. Their number is increasing in the dam area because of the release that has been carried out in recent years.

#### Mandarin duck

This particular fowl is roughly 45 cm in length and the males are colorful with striking orange.

#### Kajika frog

(Japanese singing frog)

Males are roughly 4 cm and females roughly 7 cm in length. They mainly live in the upstream of a river with the males known for their beautiful croaking sound.

#### Cormorant fishing

#### Haki

### Koishiware Ware

### Fruit picking

Hita-hikosan Line

### Harazuru Hot Spring



### Asakura Three Waterwheels (Asakura Town)

These waterwheels, said to have been constructed 200 or more years ago, are the only ones in Japan that are currently working. The largest wheel is about 4.8 m in diameter. These waterwheels are in operation from mid May to early October every year, pumping up water to irrigate paddy fields in the area. (Roughly 20 minutes drive from Terauchi Dam)

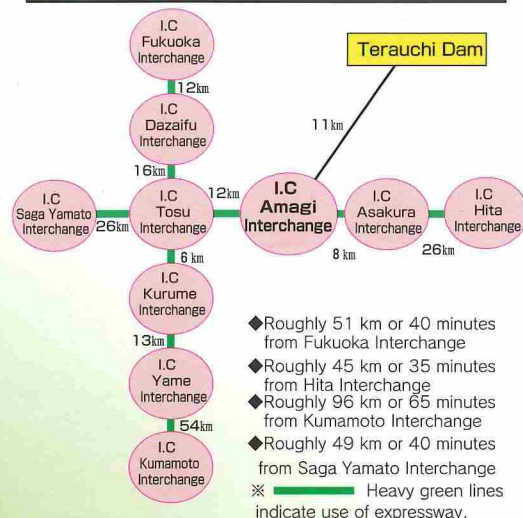


### Harazuru Hot Spring and Cormorant Fishing (Haki Town)

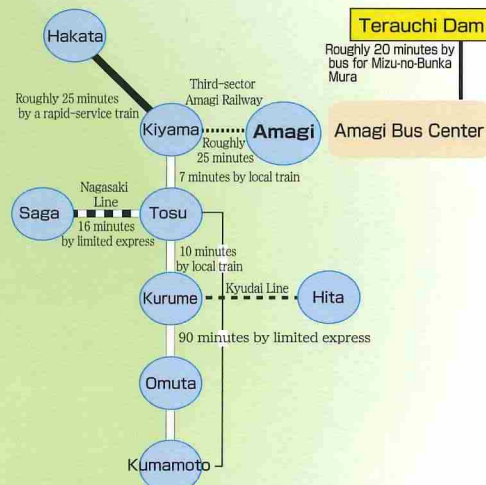
There is a lot here for families to enjoy - watching cherry blossoms in spring, picking fruits such as Kyoho grapes and persimmons, relaxing in the best hot springs in Fukuoka Prefecture. What should not be missed is the cormorant fishing from May to October. While enjoying the marvelous skills of cormorant fishermen, the lively sound of the shamisen and drum, and the traditional art, one can taste the freshly caught Ayu fish. (Roughly 25 minutes from Terauchi Dam)

# Access

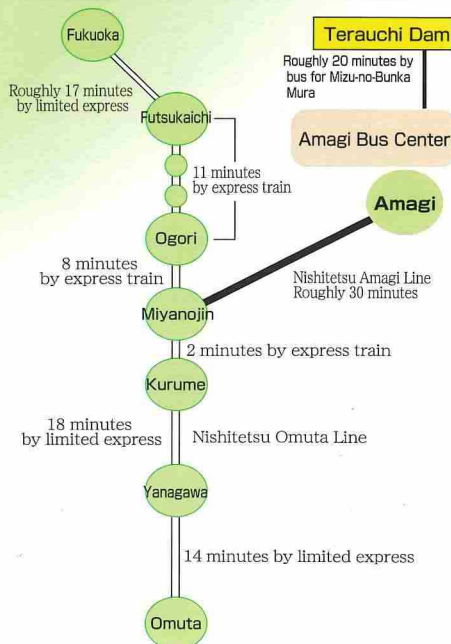
## By Car



## By JR Train



## By Nishitetsu Train



# Mascots of Terauchi Dam



●For inquiries about the Terauchi Dam:



## Terauchi Dam Control Office

Japan Water Agency (Incorporated Administrative Agency)

1516-6, Inaibaru, Asakura City, Fukuoka Prefecture 838-0029, Japan

TEL: +81-946-22-6713 FAX : +81-946-24-1561

URL of the Terauchi Dam: <http://www.water.go.jp/chikugo/terauchi/>

URL of the Japan Water Agency: <http://www.water.go.jp/>

Memo